

KAM

INSTRUCTION MANUAL

Digi Mini

Audio and video software controller with headphone monitoring

M A N U A L V E R S I O N 2 . 0
0 7 - 0 6 - 1 0

Mix & scratch music and video files with transitions and effects
Comes supplied with FREE Virtual DJ LE™ software for PC/Mac
Built-in audio for monitoring from Digi Mini and your PC/Mac
3 x programmable Hot Cues per channel
Sample and clone functions
Dual scratch effect jog wheels
3 band EQ (hi, mid & low) plus gain
Easy search music library
Crossfader & channel faders
Seamless loop / loop trim
Pitch control & master tempo
Easy search music library
BPM sync
Channel cue monitor
USB bus powered
Compatible with Virtual DJ Pro™ for Mac & PC (sold separately)

For the latest instruction manual updates and information on the entire Kam range visit:

www.kam.co.uk

Kam products are manufactured by: **Lamba plc**, Unit 1, Southfields Road, Dunstable, Bedfordshire, United Kingdom LU6 3EJ
Telephone: (+44) (0)1582 690600 • Fax: (+44) (0)1582 690400 • Email: mail@lambapl.com • Web: www.lambapl.com

If this product is ever no longer functional please take it to a recycling plant for environmentally friendly disposal.

Due to continuous product development, specifications and appearance are subject to change.

© COPYRIGHT LAMBA plc 2010. E&O E.

Connection

Connect the Digi Mini to your PC via a USB lead. Speakers can then be connected to the PC and headphones can be connected to the Digi Mini.

Install Virtual DJ Program (CD Included)

Please click the icon of install_virtualdj_le_v6.0.8.
Follow the steps below to continue installation.

1. Select language
2. Welcome screen - press next
3. End user license agreement – read and press next
4. Application path – choose and press Next
5. Start installation - press next
6. Finish installation - press finish
7. Click VDJ icon on desktop and enter serial number – start Virtual DJ LE

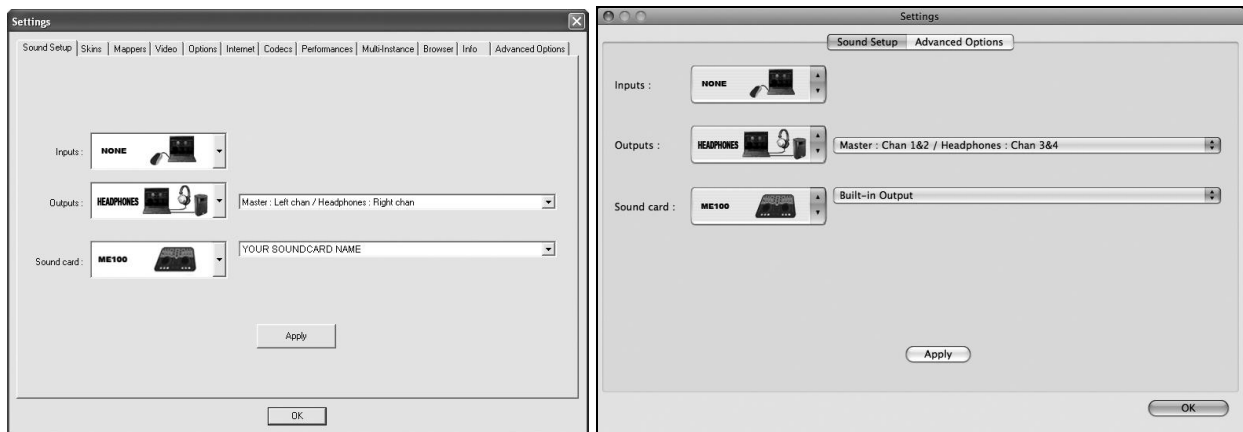
Soundcard setup

1. Click **Config** in the upper right of the screen
2. Choose output and soundcard

Soundcard: ME100

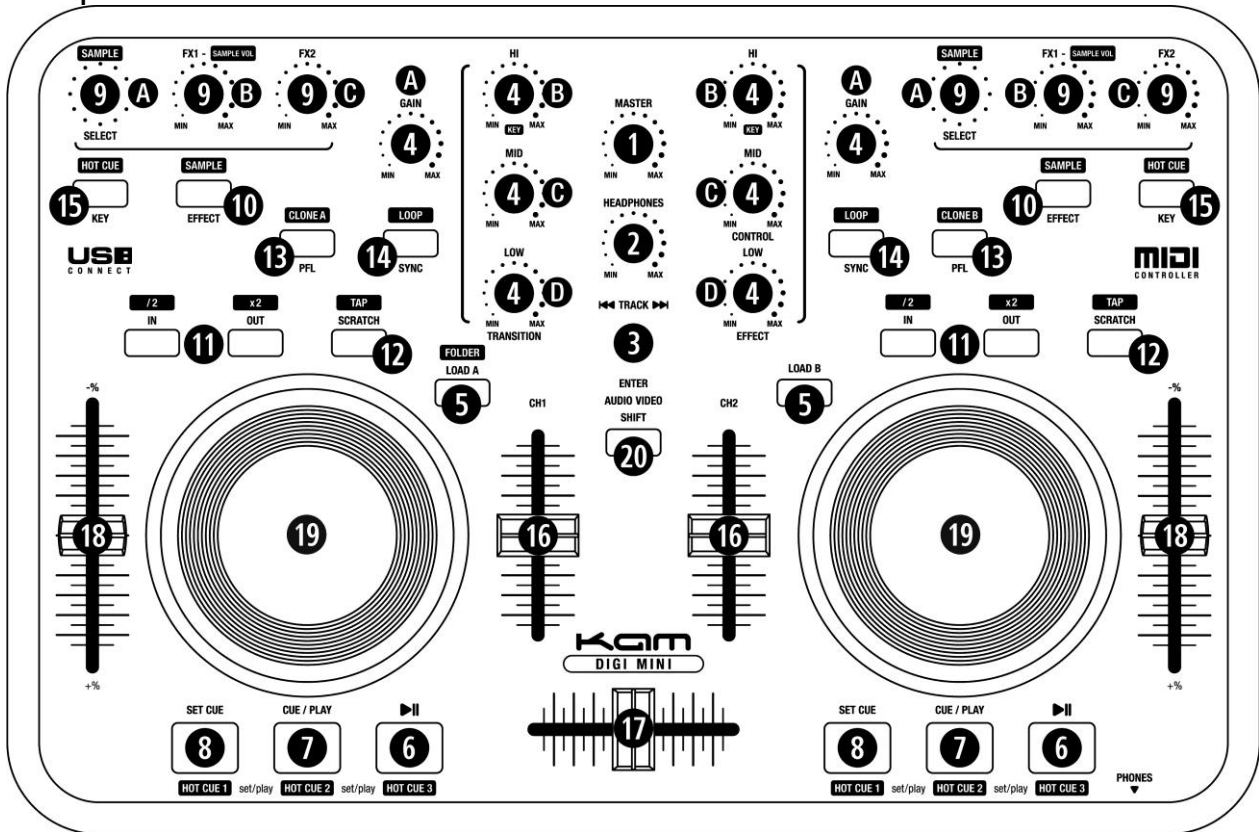
You will notice that the drop down to the right of the output has changed to show – Master: Chan1&2 / Headphones: Chan 3&4

The drop down to the right of Digi Mini has to select the respective soundcard of your PC. The screen below is an example for PC and MAC.



*After setting your soundcard, load a song to test if music has the output from your PC.

Description of functions



Audio control

1. Master - control the audio output level of PC.
2. Headphones - control the volume of your headphones.
3. Track - press the load A or load B button to select which deck to load the selected track to.
 - a. Select the track you would like to play.
 - b. Press the track select button to confirm the selection of a folder or a track.
4. Gain and EQ.
 - a. Gain - adjust the input signal level.
 - b. Hi - adjust the input treble response.
 - c. Mid - adjust the input mid range response.
 - d. Low - adjust the input bass response.
5. Load A, B/Back - Load the track to respective channel.
6. Play/Pause - play or pause the track.
7. Cue/Play - restart the music from the last memorised point.
8. Set Cue - pause the music and press this button to have a memorised point.
9. Effect/Sample parameter (holding Shift first)
 - a. EFX-S - Choose a certain effect.
 - b. EFX1-S - Adjust the parameter 1 of VDJ effect.
 - c. EFX2 - Adjust the parameter 2 of VDJ effect.
10. Effect ON/OFF - switch on/off digital effect function.
11. Seamless Loop
 - a. Press in and then press out to form a loop
 - b. Hold Shift and then press in to decrease the loop length or press out to enlarge the loop length.
12. Scratch - to switch on/off this function.
Manual BPM - hold the shift button to activate manual BPM function, while holding shift tap the scratch button to calculate BPM reading.
13. PFL - press it to monitor a specific channel. When using sample feature use PFL to assign the channel to be sampled
14. SYNC - press it to immediately synchronize with the BPM of the other channel.
15. KEY - press it to switch KEY mode on or off. If it is on, the unit maintains at a constant tempo and doesn't change while the pitch slider is moving.

16. Line fader - adjust the channel output sound level.
 17. Crossfader - switch between or mix together with music of two channels.
 18. Pitch fader - use it to adjust the pitch up or down to match the beat with the other channel.
 19. Jog Wheel - use it to dial for slight adjusting pitch value or to scratch.
 20. SHIFT key for extended menus - hold the shift key to active extended menus buttons. The text in black indicates the buttons operation in the extended menu. Hold the shift key and the jog wheel will act as a fast search.
Hold the shift key to activate the menu below:
 - Audio/video mode switch
 - Key adjust - adjust the key of the playing track without adjusting its tempo.
 - Folder
 1. Open or close a subfolder.
 2. Under the track selection mode, it allows you to go back to select the track in the other folder.
 - (8,7,6) Hot Cue
 1. Set three hot cues at first.
 2. Then play any of these three hot cues. *SET cue button can renew the hot cue point being played at the last time.
 - Sample - switch on/off sample function.
 1. EFX-S: Choose a certain sample. 2. EFX1-S: Adjust the parameter 1 of VDJ sample.
 - Auto Loop - to shift between the beat value and press OUT button to start auto loop.
 - TAP - press with the beat to get a manual BPM value.
 - Clone A, B - copy the track of one channel to the other channel.
 - Smart loop this allows you to trim the length of the loop you have recorded.
 - Smart cue this allows you to cue on the fly without pausing the played track.
 - Quick Search
- Headphone Output - use it to connect to a 3.5mm plug of a headphone. Front right of unit.
USB Connector - use it to connect with a laptop or a desktop via USB cable.

Video control

Please switch to video mode first to access the following features.

1. Load A, B - load a video file to either channel.
2. Transition - to choose and control the video cross fading effect
3. Effect - to transform the video into a different visual effect.
4. CTRL - the parameter is only for the effect, Boom Auto in LE version.

Specification

Scratch jog wheels

Play / Pause / Cue

3 band EQ (hi, mid & low)

Headphone output

Monitor the audio output through your computer speakers

Seamless loop / loop trim

Fast search forward or backward

Effect select and parameter

Adjust (depth, delay, LFO)

Pitch control

Sampling frequency: 44.1 KHz

Audio resolution: 16 bit

Output level: 1.2V±0.2V

THD+N: < 0.03%

S/N: > 80dB / Crosstalk: > 80dB

Channel fader

Channel gain

Track select

Channel cue monitor

Master tempo

USB bus powered

Dimensions: 310 x 205 x 38mm / Weighs less than 1Kg

*For an in-depth understanding of the features of the Virtual DJ program, please refer to the Virtual DJ user guide.